



Graduate Student Senate

General Assembly Meeting
December 04, 2019
Packard 416

@LehighGSS

ingss@lehigh.edu

Agenda

- University Outing Club
- External Affairs Update
- Winter Photo Contest
- LUGS 5K
- Announcements
- Open Floor



LU Outing Club

Wilderness, Friendship, Personal Growth



TOC

Overview

Wild activities

Gender in wilderness

Our contributions

Graduate community



Overview

- *Provide financially accessible wilderness engagement opportunities*
- *Foster the social connection within Lehigh's student body*
- *Promote self-care, well-being, and personal growth*

140 active members, 1k+ email list, 24 trips this semester



- Provide social opportunities and help mental health flourish



Wild Activities

- Hikes
- Camping
- Rafting
- Rock climbing
- Ski
- ...



- Focus is on building community; do not need to be strictly an outdoors person to do this



Beginner Friendly

- Intro rock climbing
- All-womens' outdoor rock climbing trip
- All-womens' backpacking trip
- ...





Contributions to LU Community

- 1 Relax and destress in wilderness
- 2 Foster an outing culture community
- 3 Reveal uniqueness of LU campus:
surrounded by so many wilderness opportunities!

Graduate students bring a sense of
matureness to social events and hikes.
One-time mentorship offers insights into
career choice, academic pursuit etc.

- Want more grad students involved in the outing club
 - Provide health and safety training, risk management training, etc.
 - Try to make it as easy for grad students to sign up and go
- Active members get unlimited access to gear shed
- Needs help pitching the concept and idea for the club to grad students
- Wanting to get more funding
 - Student engagement office
- Next semester provide the GLO Office with information about the club
 - Email chain and first blast
- Communication: 1 email a week on Mondays that tells you what the trips are for the week and weeks after that
 - Email : inouting@lehigh.edu
 - Slack info: [lu-oc.slack.com](https://lehigh-oc.slack.com)
 - No GROUPME
- Price Range: Rock or day trip , probably won't pay anything
 - Spring Break Trip: \$200-\$250
- Constantly looking for resources for the group by engaging with Student Engagement Office
 - Ideally with more funds an overnight might only be \$50-\$70
- Use own cars for everything; possibly consider GLO using its van to go on trips

External Affairs Update

- NLRB Comment deadline has been pushed back to January 15th
- Please write your own comment
- Send me an email to let me know you have submitted a comment, so we know how many comments have come from Lehigh

- 8,372 Comments
- NLRB has had to push back deadline to both Dec and then Jan 15
- NLRB wants to say students who are “employees” are not actually employees and, thus, cannot unionize
 - This means if you want to organize, this would take one avenue away from going to National Relations Labor Board to organize
- Comments can now be fairly concise and quick given the volume of them
- Question about Harvard: Harvard students on strike b/c Harvard refused to recognize better health insurance, more regulations on labor, better harassment procedures, etc.
- Lehigh has not made statement one way or the other → last year, Pres. Simon and Pat Farrell did not feel students are “employees”

als817@lehigh.edu

Winter Photo Contest

3 Categories

\$50 gift card to top photo in each category!

Submit by Jan 30, 2020

A promotional poster for the Winter Photo Contest. The background is light blue with white snowflake patterns. At the top, two Polaroid-style photos are hanging from a red string with wooden clothespins. Below this, the text reads 'CSS presents the 2019 Winter Photo Contest'. Underneath, it lists three categories: '1. Lehigh Campus', '2. Southside Bethlehem', and '3. Lehigh Around the World'. To the right of the list is a black camera icon. Below the categories, it says '\$50 gift card! Prize for each category & best overall photo!'. To the right of this text is a black smartphone icon. Further down, it states 'Submissions due Jan. 30' and '1 submission per category per person'. At the bottom, it provides submission instructions: 'Email submissions to: als817@lehigh.edu', 'File Name: lastname.category', and 'E.g., "Sackett.PicturePerfect.png"'.

CSS presents the 2019
Winter Photo Contest

Categories:

1. Lehigh Campus
2. Southside Bethlehem
3. Lehigh Around the World

\$50 gift card!
Prize for each category
& best overall photo!

Submissions due **Jan. 30**
1 submission per category per person

Email submissions to: als817@lehigh.edu
File Name: lastname.category
E.g., "Sackett.PicturePerfect.png"

- Take photos for : Lehigh campus, Lehigh and South Side, Lehigh around the World
- Submit to Alex Sackett als817@lehigh.edu

inlugs5k@lehigh.edu

Lehigh University Graduate Student's 5K

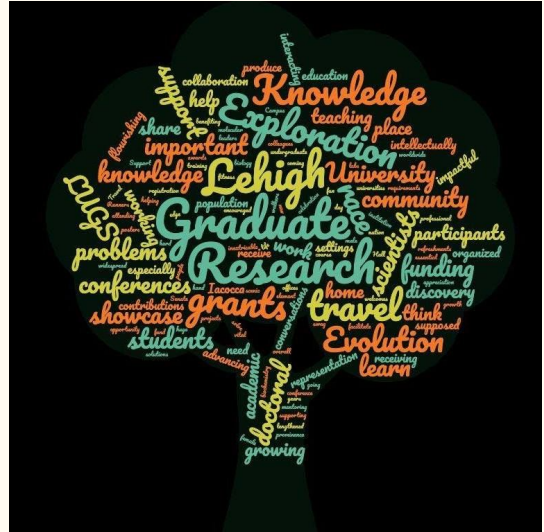
LUGS 5K supports the Travel Grants Fund

Race Date: April 19th, 2020

Volunteers needed!

Sign up at:

<https://tinyurl.com/LUGS5k2020>



<https://tinyurl.com/LUGS5k2020>

<https://forms.gle/JMDtUh49s4i6gqjr5>

- Travel Grants are routinely underfunded
- LUGS was created as a way to raise money for TG specifically
- Annual 5K to continue supporting TG
- Need volunteers for race day (sign in, directing people, refreshments, etc.)
 - Need a LOT of volunteers

foodstuff.

Let's talk food, Lehigh.

food insecurity is a lack of consistent access to food for an active, healthy life, & it's reality for many students on college campuses. **lehigh university** is not exempt.

the **gss diversity & inclusion committee** & the **dr. martin luther king, jr. celebration committee** want to know more about lehigh's relationship with food access.

we want to hear from you. it's different for everyone. your experience is important to formulate ways we can **prevent** food insecurity or **find a solution.**

share your story your way & anonymously.

it can be **one word**, a **lyric**, or **story**, & it may be featured at a story-telling event to spark dialogue & inspire action.

share using QR code or link.



[https://forms.gle/ZJzuXWT4\]pwqCh5q9](https://forms.gle/ZJzuXWT4]pwqCh5q9)

For more information or questions, contact
inml@lehigh.edu or kam7@lehigh.edu

ingss@lehigh.edu

Let's Talk Food.

Share your narratives about food
insecurity!

All submissions can be
anonymous

Food Insecurity on Campus

- Conversation happening since Winter 2018
- Newer flyer format (more approachable)
- Qualitative portion of survey about food access and insecurity
- Food insecurity looks different for different people
- Want to use the qualitative data to richen the quantitative data
- Narratives will be anonymously featured (if given permission) in an event in the Spring to show them to Lehigh admin
- Look for email later today about it

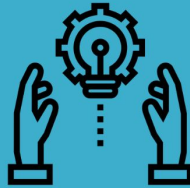
ingss@lehigh.edu

CRAFT YOUR CAREER

Thursday
December 5th
11:30-12:30pm
Iacocca Hall
Rm BO23

Lunch
Provided

Tools to
Explore
Your
Career
Options



Sponsored by: The Biological Organizations
for Graduate Students & The Center for
Career and Professional Development

- Co-hosted with Biological Organizations for Grad Students
- Good learning opportunity to see different career options and resources
- Processes, tools, and resources in looking for jobs
- Open to all!
- Nacho bar!
- Please come out!

inwise@lehigh.edu

Board Game Night

Hosted by WiSE

Thursday, Dec. 5

Packer House @ 6pm



https://docs.google.com/forms/d/e/1FAIpQLScyD_lehWKVTKCnTeGS1QIEkPvDLu_V8wCHEnAr-XUBNVeGw/viewform?usp=sf_link

ingss@lehigh.edu

Tea Time

Community Building event from
University Productions

December 6 from 8-10pm
3rd Floor Asa Packer Ballroom

Dress: Business Formal



- Opportunity for folks who normally don't get together to engage in shared conversation and dialogue
- Pastries from Lit!!

ingss@lehigh.edu

Fall Visibility Campaign

Show off your research!

Chance to win \$100 to support
academic/career goals!

Opportunity to showcase your work
to senior leadership

hey!
what's
going
on?

The #HWGOLehigh
Summer Visibility
campaign was a blast!

Told you it'd be back.

Grads do amazing work
year-round.

GSS is continuing this energy
in showing off our graduates
& helping them achieve their goals.

So, we're taking it up one more notch.

All submissions received will be considered
for the **\$100 Fall Visibility Award**, and
winners will have the opportunity to be
showcased at a university senior
leadership reception.

#HWGOLehigh
FALL 2019

- <https://forms.gle/TiLNTZd2pnggQWdt6>
- If interested, send a submission with what you're doing, how it impacts Lehigh, and why it interests you. We'll post on SM channels and winner will get \$\$\$ to academic/career goals!

gradlife@lehigh.edu

Spouses/Partners
now have access to
Taylor Gym!

Scan QR code for
request form

Happy Together

Lehigh Graduate Student
Spousal/Domestic Partner
Taylor Gym Access

All spouses/domestic partners of Lehigh University full-time, funded doctoral students who live at the same address are now eligible for free Taylor gym access

Please request your access thru the QR code form and then make an appointment with grad life for processing.



ingss@lehigh.edu

College of Health Candidates

College of Health Candidates want to meet with grad students!

Meet over lunch to discuss you experiences at Lehigh

Email: jek207@lehigh.edu



ingss@lehigh.edu

Suggestion/Concern Form

Send the E-Board feedback

What issues are you facing as a grad?

Submissions can be anonymous

<https://bitly.com/GSSsuggest>

<https://forms.gle/H45JrxGbjXb45qdh7>



<https://forms.gle/H45JrxGbjXb45qdh7>

Open Floor



- Junior for Travel Grants
 - How many have applied for travel grants before?
 - Need more people to apply for travel grants
 - This will help raise more money so more students can access for TG
 - First or second author or presenting, you can apply for up to \$225 per year
 - Can get up to \$150 per individual conference
 - Folks not presenting but want to attend
 - Can get up to \$75 per individual conference
 - Folks can apply for up to three trips of \$75
 - Cannot ask for \$225 for one conference
 - Junior edits this when application comes in
 - Application Guides
 - Junior is trying to revise the application guide and how it's presented
 - Would like to ask or suggestions for help with co-designers to make this process and guide accessible
 - No funding that can cover every price for a conference
 - Applying to multiple funding sources helps demonstrate your desire to attend
 - We still have 50% of funds available to folks



Next Meeting:

January 29, 2020

Rauch 091

@LehighGSS

ingss@lehigh.edu

Happy holidays! :)