

Graduate Student Senate

General Assembly Meeting

October 13, 2020

<https://lehigh.zoom.us/j/91392754216>



ingss@lehigh.edu

Agenda

- Treasurer Election
- Announcements
- Updates and Q&A with Kathleen
- Open Floor



Senators/Unit Reps

How to email your unit:



- Attach these slides
 - <https://grad.lehigh.edu/student-life/graduate-student-senate/meetings-and-minutes>
- Copy the agenda into your email body and add a brief summary to each point about what was said in meeting
 - I'll let you know if I think something is important to add!

External Committee Positions

Graduate and Research Committee - Need 1

University Committee on Discipline - Need 2-4

Faculty Committee on Student Life - Need 1

University Appeals Committee - Need 1-2

Leadership Awards Committee - Need 1

Faculty Committee on Facilities Planning - Need 1

Library Users Committee - Need 1

Visiting Lecturers Committee - Need 1

Lehigh Sustainability Council - Need 1

****Please share this with your units!****

****Please share this with your units!****

ingss@lehigh.edu

Treasurer Election - October 28th

Nominations open now! Email ingss@lehigh.edu

To accept a nomination, the following must be sent to ingss@lehigh.edu by October 25th:

- Statement of Intent: 500 words, describe qualifications and plans if elected
- Personal Photo

All Candidate Intent Statements will be posted online and on social media

Treasurer Responsibilities

- Understand GSS financial policies
- Act as club liason on budget related topics
- Keep track of GSS activities fund
- Request budgets from clubs at the end of the year



ingss@lehigh.edu

VIRTUAL
**DEBATE
WATCH
PARTY**

October 22
8:30 PM

Join the GSS External Affairs Committee
for this virtual event.

[Register Here](#)

<https://forms.gle/4ygjHYAF2gRMN9W36>

**FEATURING PRESIDENTIAL
BINGO WITH PRIZES!!**



GOT SOME AWESOME MENTORS?
WANT TO SHOW THEM YOUR GRATITUDE?

**NOMINATE YOUR
MENTORS TODAY**

FOR THE
**MENTORSHIP
APPRECIATION
CELEBRATION**

The Mentorship Appreciation Celebration is an excellent opportunity to show appreciation for faculty mentors who have positively impacted your career here at Lehigh. Nominees will be invited to the virtual celebration and receive a certificate of appreciation.

Deadline for nominations: October 16

ingss@lehigh.edu

Information Pages for Graduate Students

Graduate Life Office Homepage:

<https://gradlife.web.lehigh.edu/>

Graduate Student COVID-19 Information Page:

<https://www.lehigh.edu/~inprv/organization/graduate>

Lehigh COVID-19 Information Center:

<https://coronavirus.lehigh.edu/>

ingss@lehigh.edu

Covid guidelines for graduate students

<https://tinyurl.com/lehighcovidguidelinesforgrads>

Mental Health - Self-Care



<https://tinyurl.com/LehighSelfCare>

<https://docs.google.com/spreadsheets/d/1pdoAf-MkxeOB8pAM4qGge4TagEryIDXJzjiaoDCM7pY/edit?usp=sharing>

- Natania and Sara have put together this self care guide.

ingss@lehigh.edu

Mental Health Resources

Counseling Center access is still available via Zoom or phone

After hours counselor always available.

Dial (610)758-3880, select “0” on the keypad

[Therapists in the Lehigh Valley Database](#)

Put together by grad student Natania Lipp

Keep up to date:

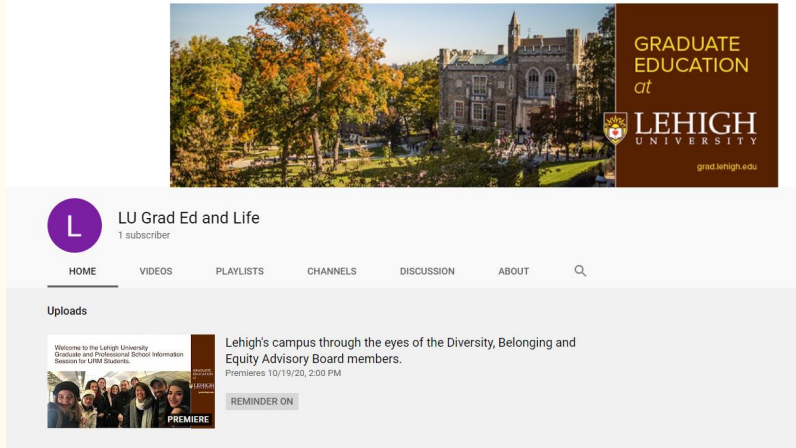
<https://studentaffairs.lehigh.edu/content/covid-19-counseling-psychological-services-updates>

ingss@lehigh.edu

Subscribe to GLO's new YouTube Channel

<https://youtube.com/channel/UCIVTXEgcMgCJJ8mqxcjTU7A>

Join us for the premiere of our first video on Monday, October 19 at 2pm!



The screenshot shows the YouTube channel page for 'LU Grad Ed and Life'. At the top, there is a banner image featuring a scenic view of Lehigh University's campus with trees in autumn and a large stone building. To the right of the image is a dark brown vertical banner with the text 'GRADUATE EDUCATION at LEHIGH UNIVERSITY' and the university's logo. Below the banner, the channel name 'LU Grad Ed and Life' is displayed with a purple circular profile picture containing a white letter 'L' and the text '1 subscriber'. A navigation menu includes 'HOME', 'VIDEOS', 'PLAYLISTS', 'CHANNELS', 'DISCUSSION', and 'ABOUT'. Under the 'Uploads' section, a video thumbnail is shown with the title 'Lehigh's campus through the eyes of the Diversity, Belonging and Equity Advisory Board members.' and the premiere date 'Premieres 10/19/20, 2:00 PM'. A 'PREMIERE' badge is visible on the video thumbnail, and a 'REMINDER ON' button is located below it.

Career Center

Delivering Effective Presentations

Strategies to engage your audience in-person and virtually

Grad Students

Join us:

November 4th

12:15 pm - 1:15 pm

Register on Handshake

Access via Zoom

Presented by: Lehigh Graduate Education & Life and the Center for Career and Professional Development

THE OFFICE OF INTERNATIONAL STUDENTS AND SCHOLARS
AND THE CENTER FOR CAREER AND PROFESSIONAL DEVELOPMENT PRESENT:

INTERNATIONAL CAREER PERSPECTIVES ROUNDTABLE

DEVELOP PROFESSIONALLY TO
REACH YOUR CAREER GOALS

Wednesday, October 28th from 9 am - 10 am
ZOOM LINK ON HANDSHAKE

Lead Speakers Include:



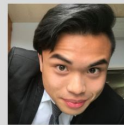
Bashir Sadat



Neha Mandhyani



Nino Dzotsenidze



Adrian Suarez



Arzoo Karki



Jorgo Tesfo



Tariq Al-Serhan

Graduate Writing Support

Graduate Writing Support Presents:

Professional Writing Workshop Series

Constructing a Professional Email

co-facilitated with CCPD

Wednesday, September 9, 12:15-1:15

Writing a Professional Proposal

Wednesday, September 23, 12:15-1:15

Grant Writing: A General Overview

co-facilitated with the Office of the VPR

Wednesday, October 7, 12:15-1:15

Drafting Persuasive Messages

Wednesday, October 21, 12:15-1:15

Delivering Effective Presentations

Wednesday, November 4, 12:15-1:15

[To register, visit Graduate Writing Support](#)

GRADUATE WRITERS' STUDIO

NOW OPEN!

schedule your consultation here:
mywco.com/lehighgradwriting

- Consultation methods
 - Online Asynchronous (etutoring)
 - Online Synchronous
- Consultations scheduled for 1-2 hours
- Consultants will work with you and any document up to 20 pages.
 - For synchronous sessions with any document larger than 5 pages, please submit the document at least 5 hours prior to the appointment time to provide the consultant adequate time to read and form beneficial feedback.



Consultations are opening up more; GAs are available for consultations as well
There is one other workshop in the professional writing series: Drafting Persuasive Messages on Wednesday, 10/21 from 12:15-1:15pm
December 5th and 12th (Saturdays), Yvonne will be hosting two all-day writing retreats (9am-10pm).

- More information will be shared later
- These will be virtual
- Will include 20-30 minute workshops to pop into

Graduate Writing Support Introduces

New Graduate Writing Consultants!

Sine Zungu



Full Name:
Simonehrista Porlet Zungu
Preferred Name:
Sine
Preferred Pronouns:
She/Her/hers
Grad Status:
Fourth year PhD student
Studying:
Social Psychology
Reason for Becoming a Writing Consultant:
I think writing can be such an empowering process. I want to help grad writers feel confident in their writing abilities
Writing Strengths:
I am able to help with issues of structure and flow

Joey Andrews



Full Name:
Warren Joseph Andrews
Preferred Name:
Joey
Preferred Pronouns:
He/Him/his
Grad Status:
Second year master's student
Studying:
Healthcare Systems Engineering
Reason for Becoming a Writing Consultant:
Through this opportunity, I look forward to collaborating with writers from across various disciplines by exploring their ideas and perspectives together with them, to help them find their own voice through their writing.
Writing Strengths:
Writing in Engineering / Organizing and composing ideas and content / Working with multilingual learners.

Schedule your asynchronous consultation with them at mywco.com/lehighgradwriting

The background of this section features a grid of stylized book icons. Most are blue with white outlines, while some are red with white outlines. In the upper right, there is a logo for the Center for Gender Equity (CGE), which consists of a stylized flower or leaf design in blue and red, with the text "CENTER FOR GENDER EQUITY" below it.

JOIN THE CGE'S VIRTUAL
READING GROUP!

We will be discussing the first half of
Emma Donoghue's

Hood

MEETING BIWEEKLY STARTING
OCTOBER 8TH | 3:00-4:00PM

EMAIL TESS (TMP218@LEHIGH.EDU)
FOR MORE INFORMATION.

THIS EVENT IS OPEN TO ALL.

JOIN US!

FILLING YOUR CUP: A CONVERSATION ABOUT FEELINGS, FATIGUE, AND FULFILLMENT

*Bring your favorite non-alcoholic
self-care beverage.*

Wednesday, October 21st
4:30-5:30pm ET

Register at
go.lehigh.edu/fillingyourcup

If you are an individual with a
disability and need accommodations in
order to participate in this event,
please contact Alfredo Ramirez in
advance at alr619@lehigh.edu.

THE OFFICE OF
STUDENT
ENGAGEMENT





Lehigh University
Graduate Education

Sunday, October 18
2-5pm EST

Graduate and Professional School
Virtual Information Session
for Underrepresented Minority Students

- Meet with students and faculty in your program of interest.
- Get advice from faculty, staff, and students from diverse backgrounds.
- Learn about academic, career, and other support services for our graduate students.

[Register here](#)

Registration closes October 11, 2020

[For more information please click here](#)

Attend our virtual event and
receive a code to waive your application fee.

[Lehigh University, Bethlehem, PA](#)



THE FOURTH ANNUAL

**WOMEN IN
STEM DINNER**

CO-HOSTED BY AOE, SWE, AND WISE

KEYNOTE SPEAKER:
SALISA BERRIEN

**THURSDAY, OCTOBER
22ND 5:30-7PM**

RSVP VIA EVITE: [LINK](#)



TRIGGER WARNING: *This event will discuss body image and nutrition*

Covid-19, Social Media, & Body Positivity

Virtual Event/Discussion On Zoom

10-14-2020

3:00 PM



If you are an individual with a disability and need accommodations in order to participate in this event, please contact Tess Pyne in advance at tmp218@lehigh.edu

For Zoom Registration Link: Email tmp218@lehigh.edu

Is it bad for our mental health?



Does social media increase discrimination?

...



OCTOBER 15TH

@ 4PM ET

REGISTER IN ADVANCE:

GO.LEHIGH.EDU/SOCIALDILEMMA

JOIN US

AS WE WATCH CLIPS FROM

THE SOCIAL DILEMMA

& DISCUSS OUR DIGITAL LIVES.



If you are an individual with a disability and need accommodations in order to participate in this event, please contact Tess Pyne in advance at ttmp218@lehigh.edu.

Are you looking for a little routine in your life?

A way to mark the passage of time and its rhythms?

Join us for
Rosh Chodesh!

A Time for Rest, Relaxation, and Reflection

Rosh Chodesh is the ancient Jewish practice of marking the start of each month. Jewish feminists took it up as a way to reclaim and reimagine community. Open to all, our Rosh Chodesh meetings will hold space for open dialogue and offer self care practices, creating purpose through ritual.

We'll mark the start of Cheshvan on Monday, October 19th from 7:00 to 7:45pm ET.

Open to all women-oriented folks and their allies.

All are welcome.

Register at go.lehigh.edu/roshchodesh

If you are an individual with a disability and need accommodations in order to participate in this event, please contact Tess Pyne in advance at tmp218@lehigh.edu.



Lehigh
UNIVERSITY

Lehigh
Hillel

HYBRID LEARNING Donation Drive



October 5th - October 16th
DONATE SCHOOL SUPPLIES

Cleaning Products (hand sanitizer, disinfecting wipes, hand soap, masks)

School supplies (markers, pencils, kid scissors, glue sticks, individual pencil sharpeners, notebooks)

Non-perishable food items (granola bars, oatmeal, cereal, mac & cheese, pasta, canned tuna, peanut butter, crackers, applesauce, fruit cups etc.)

Hygiene products (deodorant, tissues, bar soap)



**DONATE on AMAZON WISHLIST
or DROP OFF at
UC 2nd FLOOR LOBBY**



Benefits Students & Teachers at Donegan, Fountain Hill, Broughal & Liberty High School



Hang out in the Virtual PC Lounge 24/7 Staffed 11am-4pm (est) weekdays
[GO.LEHIGH.EDU/VIRTUALPRIDECENTERLOUNGE](http://go.lehigh.edu/virtualpridecenterlounge)

on campus or remote...
 the Pride Center is
 always here for
 YOU


MENTAL HEALTH MONDAYS
 9/24
 10/19
 11/16
 via social media

FIERCE FILM FRIDAYS
 9/25
 10/23
 11/13
 in our virtual lounge

LGBTQ+ 101 - 9/9
GTPOC - 10/7
QUEER CRIMINALIZATION - 11/11
 Sign up for 1, 2 or all 3 at
go.lehigh.edu/virtually

LUNCH & LEARNS
 9/18
 10/15
 11/3
 in our virtual lounge

Meet 1 on 1 with a PC Staff Member at
pridecenter.youcanbook.me

 email us at pridecenter@lehigh.edu

Updates with Kathleen!



How have the changes in the past week been affecting you? Do you have questions about how these changes affect graduate students?

- Program updates:
 - Porch hours suspended
 - Women's Group online
- COVID on campus:
 - 15 graduate students are quarantined; one positive case
 - Students who are quarantined are either negative or waiting on a negative test
 - Rate of increase is starting to slow
 - Nobody has required hospitalization for COVID so far
- Other updates about logistics:
 - Nathan Urban feels that any policies that are pertinent to faculty, that research and TAs should have the same policies
 - Graduate students are allowed to access the libraries; call the library help desk to arrange this
 - Don't have clarity about whether grad students living not on campus can use outside spaces
 - Longer break over the winter might be challenging for students; **what can we do for outreach for students?**
- Questions:
 - Will there be another opportunity for grad students to get tested?
 - Undergrads and grads will continue to be randomly selected for surveillance testing

- Health Center is doing rapid testing for students who feel symptomatic
- Has there been any word on whether or not classes will be virtual in the spring?
 - No
- Can we return to low-risk states for the breaks?
 - Yes; if you return to a hot-spot state, you'll be asked to quarantine when you return
- Can grad students living in student housing have overnight visitors from out of state?
 - Yes, as long as they follow the same protocols (download the HawkWatch app if you're going to be on campus at all)
- Any additional questions, email Kathleen Hutnik kaha@lehigh.edu

COVID tests:

- Can get one pretty easily and for free at Rite Aid and CVS; make an appointment online in advance
- This is no-contact - you receive the testing supplies through the prescription draw at the drive through

ingss@lehigh.edu

Suggestion/Concern Form

Send the E-Board feedback

What issues are you facing as a grad?

Submissions can be anonymous

<https://bitly.com/GSSsuggest>

<https://forms.gle/H45JrxGbjXb45qdh7>



<https://forms.gle/H45JrxGbjXb45qdh7>

Open Floor



Sara Beachy, she/her (CPSY and Mental Health Committee)

- Thinking about doing a panel about seeking mental health services during this time
 - If anyone is interested (either in being part of the panel or attending it), reach out to Sara, Natania Lipp, or Raquel Sosa
- If you have ideas of activities you would like to see the committee do, please reach out
- Mental Health Mondays will start - in the GS Facebook page, small and practicable suggestions for mental healthcare (apps, activities, etc) will be posted every Monday
- Emails: Sara - sab617@lehigh.edu; Natania - nsl319@lehigh.edu; Raquel - ras619@lehigh.edu

Leslie Pearson from CGE will be teaching a workshop on zines; posted on usual social media sites

Sign-up link: go.lehigh.edu/CGEzines



Next Meeting:
October 28th, 12:10-1pm

<https://lehigh.zoom.us/j/91392754216>



ingss@lehigh.edu