

# Graduate Student Senate

General Assembly Meeting

April 7, 2021

<https://lehigh.zoom.us/j/92992708503>



[ingss@lehigh.edu](mailto:ingss@lehigh.edu)

Kadia Hylton-Fraser is stepping in to replace Jess as the president of GSS.

# Agenda

- Nancy Carlisle - OneLehigh
- Counseling Center Initiative
- GSS Eboard Nominations
- Election Committee
- Grad Appreciation Month & Say-it-in-six Update
- Announcements
- Open Floor

# ONE LEHIGH

## CHALLENGES

- Lehigh has wonderful existing educational opportunities on Diversity, Equity, & Inclusion (DEI), but there is limited take up
- Disconnect between the good resources and daily experience
- Exposure to DEI education can be piecemeal, and some members of Lehigh may go years between learning
- Turning goals into actions-visibility

## PROPOSAL

- Amplify existing resources to reach EVERY member of Lehigh's community EVERY year
  - Generate ongoing learning; Create a knowledge base across students, faculty, and staff; Enhance open and continuing dialogue
- Rotating focus- topics decided by ODI&E
  - Multicultural Issues/Racism; Gender; Sexuality; Religion
  - Repeat key DEI ideas: Empathy, practical skills, allyship, intersectionality
- Create a mixture of learning experiences each semester
  - Large outreach (online)
  - Small group peer interaction (e.g. faculty/staff meeting prompts, dorm events, fraternity education)
  - Social media, Brown & White, print campaigns
- **OneLehigh** as a connection point- access other resources and connect of events

Nancy Carlisle, member of Council for Equity and Community

- Part of Education Working Group
- Currently looking at metrics - who is engaging in workshops, and how much are they engaging? Can we track that information to improve engagement?
- Possibility of incentivizing participation by creating a workshop or something of the sort

Feedback for Nancy on these proposal ideas:

- Diversity training for incoming graduate students who will be TAs
- Some grad students are mentors for undergrads and grads; include them in faculty training sessions, specifically when they are related to mentorship
- Something like teacher development series, but more tailored for graduate students
- Political diversity
- Need to expand who is attending the trainings and exposure to these conversations
- Ongoing feedback from graduate students about the topics

# from Me with LUv

- Contact Briana Luppino
- [brl319@lehigh.edu](mailto:brl319@lehigh.edu)

## from Me with LUv

**FRIDAY APRIL 16 AT 1:30PM**

[go.lehigh.edu/luvletters](http://go.lehigh.edu/luvletters)

Sometimes when we are struggling, it can help us to help someone else. Join us in taking a moment to reflect and send care to members of the our Lehigh community with anonymous LUv letters to students feeling isolated.



#fromherewithLUv

[ingss@lehigh.edu](mailto:ingss@lehigh.edu)

# Say It In Six



The flyer features the Lehigh University crest in the top left corner. The title 'SAY IT IN' is underlined, followed by a large orange circle containing the number '6'. Below this, the text reads 'WHAT IS THIS?' followed by 'SHARE AN ASPECT OF YOUR GRADUATE EXPERIENCE USING ONLY 6 WORDS AND 1 ORIGINAL IMAGE.' The 'THREE CATEGORIES:' section lists: 'WHO INSPIRES YOU?', 'DISTANT BUT CONNECTED.', and 'NEW SKILLS AND HOBBIES.' A note states 'ALL SUBMISSIONS WILL BE DISPLAYED IN FML FOR PUBLIC VOTING.' A circular graphic on the left lists prizes: '\$500 OVERALL WINNER', '\$100 1ST IN CATEGORIES', and '\$50 HONORABLE MENTIONS'. To the right, it says 'ONE SUBMISSION', 'ONE ORIGINAL IMAGE', and 'SIX WORDS'. A QR code is labeled 'MORE INFO HERE:'. At the bottom, it says 'SUBMIT BY MARCH 29' and 'Brought to you by the Graduate Life Office'.

**SAY IT IN** 6

WHAT IS THIS?  
SHARE AN ASPECT OF YOUR GRADUATE EXPERIENCE  
USING ONLY 6 WORDS AND 1 ORIGINAL IMAGE.

THREE CATEGORIES:

- WHO INSPIRES YOU?
- DISTANT BUT CONNECTED.
- NEW SKILLS AND HOBBIES.

ALL SUBMISSIONS WILL BE DISPLAYED IN FML FOR PUBLIC VOTING.

\$500  
OVERALL WINNER  
\$100 1ST IN CATEGORIES  
\$50 HONORABLE MENTIONS

ONE SUBMISSION  
ONE ORIGINAL IMAGE  
SIX WORDS

MORE INFO HERE:  


SUBMIT BY  
MARCH 29

Brought to you by the Graduate Life Office

Anonymous donor for matching donations for an emergency fund; looking for Lehigh students to be ambassadors for this

Reach out to Kathleen Hutnik at [kaha@lehigh.edu](mailto:kaha@lehigh.edu), if interested

Giving Day site for grad life:

<https://www.lehighgivingday.com/campaigns/office-of-graduate-student-life>

[ingss@lehigh.edu](mailto:ingss@lehigh.edu)

# GSS Executive Board Elections

## Timeline:

- April 14: Nominations Close; Statements of Intent Due
- April 21: Candidate Speeches and Voting
- May 5: New E-Board Runs the Meeting!

Email nominations to [ingss@lehigh.edu](mailto:ingss@lehigh.edu)



## Seconded Nominations:

- Caitlin Lindley for President
- Sam Miller-Brown for Treasurer
- Teresa Mowad for VP
- Joan Spinelli for External Affairs
- Natania Lipp for Secretary

## Nomination form:

<https://docs.google.com/forms/d/e/1FAIpQLSeX7I7Yiux-na3sjf--fSI4JJTmFzI7GSEBkqw-Cj2gR-EMNg/viewform>

## Election Committee

- Announcer (1): shall preside over all election proceedings and be the primary speaker during election activities at the General Assembly meetings.
- Record keepers (2): two students including at least one outgoing Executive Board member (if possible).
- Supervisor: Grad Life Director
- Not eligible to vote or run for Eboard positions
- At least one person from each College

[ingss@lehigh.edu](mailto:ingss@lehigh.edu)

## Donning of the Kente

- Graduating this May?
- A BIPOC Student?
- Interested in the Donning of the Kente Ceremony?
- Contact Chad Williams at the OMA: [chw520@lehigh.edu](mailto:chw520@lehigh.edu)





[ingss@lehigh.edu](mailto:ingss@lehigh.edu)

CCPD Celebrates Graduate  
Student Appreciation Month!



Join us for:  
**LEVERAGE  
LINKEDIN TO  
BUILD YOUR  
NETWORK**

**THURSDAY, APRIL 22**  
3:45 pm to 5 pm

Register  
[lehigh.joinhandshake.com](https://lehigh.joinhandshake.com)  
Access via Zoom

- \*Take your own professional headshot
- \*Create a strong profile
- \*Expand your connections

[ingss@lehigh.edu](mailto:ingss@lehigh.edu)

**RESEARCH ROUNDTABLE**

Join us in exploring interdisciplinary research at Lehigh related to gender equity and learn about how you can get involved.

April 7th 5 pm to 6 pm  
Please register at:  
[lehigh.edu/engroundtable](https://lehigh.edu/engroundtable)

[ingss@lehigh.edu](mailto:ingss@lehigh.edu)



SAVE THESE DATES!  
THE LEHIGH UNIVERSITY PRIDE CENTER  
PRESENTS A FIERCE FILM FESTIVAL!

***APRIL 2: DIFFERENT FROM THE OTHERS (1919)***

***APRIL 9: GLEN OR GLENDA (1953)***

***APRIL 16: DOG DAY AFTERNOON (1975)***

***APRIL 23: BY HOOK OR BY CROOK (2001)***

***APRIL 30: TANGERINE (2015)***

Join us to explore the shifts in trans  
representation on the silver screen over more  
than a century!

ALL SCREENINGS BEGIN AT 2PM (EST) AT  
[GO.LEHIGH.EDU/VIRTUALPRIDECENTERLOUNGE](http://GO.LEHIGH.EDU/VIRTUALPRIDECENTERLOUNGE)

[ingss@lehigh.edu](mailto:ingss@lehigh.edu)



- Int'l students should just call LVHN to get an appt. They won't ask for SSN over the phone.
- There might be a vaccine clinic either on campus or at Sands for Lehigh folks.



Grad Appreciation Week Special Event  
Sponsored by Grad Life Office & Grad Students Outing Club



[ingss@lehigh.edu](mailto:ingss@lehigh.edu)

# JIM THORPE SCENIC TRAIN RIDE & BIKING

1HR TRAIN RIDE + DOWNHILL BIKING FOR  
25 MI (BIKE & SNACKS INCLUDED)

**SATURDAY,  
APRIL 17**

For more info, click the link provided.  
Original price \$55. For Lehigh Grad  
Student only \$15!!



[ingss@lehigh.edu](mailto:ingss@lehigh.edu)

Graduate  
Assistant  
Positions  
Available in OISS:  
GA for the Global  
Union  
GA for OISS

Job descriptions and  
eligibility on  
Handshake. Questions?  
Contact Caroline Neal  
at [cbn219@lehigh.edu](mailto:cbn219@lehigh.edu)

GLOBAL UNION  
EXECUTIVE BOARD  
APPLICATION OPEN

2021 - 2022



Find the application here: <http://bit.ly/GUApp2021>  
APPLICATION DUE MARCH 24TH

Deadline extended until: April 23



The Office of Research  
& Graduate Studies

Graduate Writing Support *in collaboration*

## Grant & Fellowship Writing Workshops for Graduate Students

### Planning

March 1, 3:00pm - 4:00pm

*Reviewing a Call for Proposals  
Planning Ahead and Mobilizing Support  
Planning Your Research*

### Drafting

April 5, 3:00pm - 4:00pm

*Telling Your Story*

### Revising & Submitting

May 3, 3:00pm - 4:00pm

*Picking a Plot  
Writing a Draft  
Reviewing  
Revising  
Submitting*



Registration Required: <https://argo.page.link/saJjH>



Graduate Writing Support

[gh.edu](https://www.lehigh.edu)

## Publishing Workshops for Graduate Students

Join Dr. Yvonne Lee, Director of Graduate Writing Support, to talk about the ups and downs of getting your academic writing published.

Publishing workshops will be held the first Friday of the month from 9:00am-10:30am.

Facing Obstacles - March 5  
Dealing with Rejections - April 2  
Moving Towards Acceptance - May 7

Registration required.

Feel free to register for as many or as few as you are able to attend.

Visit the GWS Workshop page for registration information:

<https://grad.lehigh.edu/academics/graduate-writing-support/workshops>

Ask Yvonne to talk a bit about the Writing/Reading Challenge

Graduate Writing Support Introduces...

### Our Newest Graduate Writing Consultant!

Preferred Name: Paula

Preferred Pronouns: she/her/hers

Grad Status: Doctoral Student

Studying: Educational Leadership

Consultations Offered: Online Drop Off



**Reason for Becoming a Writing Consultant:** Writing has always intrigued me from the way different writers think to the flow of the words and structure of the draft. I love to read what people write as it gives me an insight into their thoughts and understanding of different subjects. Having the opportunity to collaborate with other writers on their own creations is an honor that I am looking forward to.

**Writing Strengths:** word choice, sentence structure, mechanics, and organization

**SCHEDULE YOUR CONSULTATION AT**  
[HTTPS://GRAD.LEHIGH.EDU/ACADEMICS/GRADUATE-WRITERS-STUDIO/CONSULTATIONS](https://grad.lehigh.edu/academics/graduate-writers-studio/consultations)

Graduate Writing Support Introduces...

### Our Newest Graduate Writing Consultant!

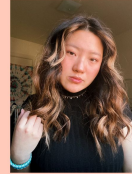
Preferred Name: Lisa

Preferred Pronouns: she/her/hers

Grad Status: First Year Master's student

Studying: Counseling and Human Services

Consultations Offered: Online Drop Off



**Reason for Becoming a Writing Consultant:** I am someone who really enjoys writing and editing, and I was looking for a way to become more involved on campus and for a way to meet new people. I look forward to collaborating with writers from different disciplines and help them utilize their writing skills to their best ability.

**Writing Strengths:** Grammar, sentence structure, the flow of a paper, cohesiveness of ideas

**SCHEDULE YOUR CONSULTATION AT**  
[HTTPS://LEHIGH.MYWCONLINE.COM/](https://lehigh.mywconline.com/)



## Student Proposed Writing Group - "The Scribble Workshop"

Email Dr. Lee at [yrl219@lehigh.edu](mailto:yrl219@lehigh.edu) if you are interested in participating!

*The Scribble Workshop is a small group of fiction and nonfiction writers at Lehigh who love to write. Quite simply, when we write, we achieve flow- a state of jubilation that derives from doing an activity that engages the mind fully. Crafting a story, or developing an argument on paper is extremely satisfying. Like a musician who loves to compose, or a painter who loves to splatter colors on canvas, we love to write.*

*The Scribble Workshop is looking for **a small group of writers (3-5 total)** who will meet once per week (W,R, or F mornings 8:00AM-9:00AM) via zoom. On the Sunday prior to the first day of each month, all members will submit 5-10 pages of original work. Each week by random selection, the group will focus on one or two submissions at a time. We will establish topic items for each reviewer to critique the work. At our meeting, we will go around the group and share the critiques, one at a time. Each member of the group will offer commentary on each critique presented. By the end of the month we will have reviewed all writing submissions and then we repeat the same cycle over and over again.*

*Sample critique topics for fiction and nonfiction will be provided.*



# Career Center

## BRING THE CAREER CENTER TO YOU!

### Career support for your graduate club or department



#### Customized workshops

Request a workshop on career exploration, personal branding & job search strategies, networking, interviewing and more



#### Working sessions

Plan a session to work on a resume, CV, cover letter, or LinkedIn profile as a group with your Graduate Career Coach



#### Event collaboration

Partner with the Career Center to access resources and promote your professional development event

Contact Ali Erk - [alison.erk@lehigh.edu](mailto:alison.erk@lehigh.edu)

*career ready = life ready*  
Center for Career & Professional Development

CAMPUS ATHLETICS PRESENTS

# SPRING VIRTUAL FITNESS CLASSES

- FREE to the Lehigh community!
- 45 minute fitness classes will be taught by professional fitness instructors via Zoom.
- Class schedule will be published monthly and is subject to change.

**Register here:**

[forms.gle/S6ZnUPDSzfreiow6A](https://forms.gle/S6ZnUPDSzfreiow6A)



[ingss@lehigh.edu](mailto:ingss@lehigh.edu)

[ingss@lehigh.edu](mailto:ingss@lehigh.edu)



CAMPUS ATHLETICS PRESENTS

## STUDENT FITNESS & WELLNESS ACCOUNTABILITY GROUP

- Join a weekly accountability group with your Lehigh peers that will help motivate you to set positive goals and adopting healthy lifestyle habits.
- Student accountability group will meet Mondays, 7:00pm - 7:30pm via Zoom.
- Register here: [forms.gle/QY6kXGH2KP8W6myKZ](https://forms.gle/QY6kXGH2KP8W6myKZ) or email Teresa Carotenuto at [tnc219@lehigh.edu](mailto:tnc219@lehigh.edu)

[ingss@lehigh.edu](mailto:ingss@lehigh.edu)

**Healthy. Happy.  
Here we come.**



Start your free membership on February 1, 2021

[go.lehigh.edu/headspace](https://go.lehigh.edu/headspace)

Need help?  
[teamsupport@headspace.com](mailto:teamsupport@headspace.com)



LEHIGH

PEER HEALTH  
ADVISORS

LU  
Student Auxiliary  
Services



BRING YOUR OWN STITCHING PROJECT,  
START ONE, OR LEARN/TEACH SKILLS!

# STITCH AWAY STRESS

Embroidery, cross stitch, crochet, and  
knitting: you're in charge. Take time to  
create and explore and build community.

Wednesdays at 7:00pm EST via Zoom.  
See caption for link info

If you are an individual with a disability and need accommodations  
in order to participate in this event, please contact Tess Pyne  
IN ADVANCE at [tmp218@lehigh.edu](mailto:tmp218@lehigh.edu).

# Graduate Women's Exchange

[ingss@lehigh.edu](mailto:ingss@lehigh.edu)

Women's Exchange provides a space for graduate women from all walks of life to develop meaningful relationships and promote personal growth. We will have guest presentations and activities .

**WE MISS YOU!  
COME JOIN US!**

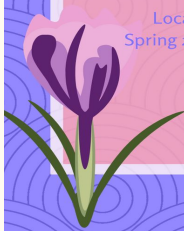


Location: Virtual until we can be together again!  
Spring 2021: February 11 & 25, March 11 & 25 and April 8  
12-1pm

Please sign up to receive zoom link.  
<https://qr.go.page.link/csjEX>



#LUGLOevents



## External Committee Positions

Graduate and Research Committee - Need 1

University Committee on Discipline - Need 2-4

University Appeals Committee - Need 1-2

Leadership Awards Committee - Need 1

Faculty Committee on Facilities Planning - Need 1

Library Users Committee - Need 1

Visiting Lecturers Committee - Need 1

**\*\*Please share this with your units!\*\***



[ingss@lehigh.edu](mailto:ingss@lehigh.edu)

## Information Pages for Graduate Students

Graduate Life Office Homepage:

<https://gradlife.web.lehigh.edu/>

Graduate Student COVID-19 Information Page:

<https://www.lehigh.edu/~inprv/organization/graduate>

Lehigh COVID-19 Information Center:

<https://coronavirus.lehigh.edu/>

Resources for off-campus testing:

<https://studentaffairs.lehigh.edu/content/covid-19-testing-resources-0>

[ingss@lehigh.edu](mailto:ingss@lehigh.edu)

# Covid guidelines for graduate students

<https://tinyurl.com/lehighcovidguidelinesforgrads>

[ingss@lehigh.edu](mailto:ingss@lehigh.edu)

## Mental Health Resources

Counseling Center access is still available via Zoom or phone

After hours counselor always available.

Dial **(610)758-3880**, select “**0**” on the keypad

### Therapists in the Lehigh Valley Database

Put together by grad student Natania Lipp


Keep up to date:

<https://studentaffairs.lehigh.edu/content/covid-19-counseling-psychological-services-updates>

[ingss@lehigh.edu](mailto:ingss@lehigh.edu)

# Subscribe to GLO's YouTube Channel

<https://youtube.com/channel/UCIVTXEgcMgCJJ8mqxcjTU7A>



The banner features a photograph of a Lehigh University building with trees in autumn. On the right side, there is a dark brown box with the text "GRADUATE EDUCATION at LEHIGH UNIVERSITY" and the university's crest. Below the crest, the website "grad.lehigh.edu" is visible.

**L** LU Grad Ed and Life  
1 subscriber

HOME VIDEOS PLAYLISTS CHANNELS DISCUSSION ABOUT 🔍

Uploads

Welcome to the Lehigh University Graduate and Professional School Information Session for URM Students.

Lehigh's campus through the eyes of the Diversity, Belonging and Equity Advisory Board members.  
Premieres 10/19/20, 2:00 PM

PREMIERE

REMINDER ON

[ingss@lehigh.edu](mailto:ingss@lehigh.edu)

# We need YOUR feedback

On Lehigh's COVID  
response

<https://forms.gle/mQo8BY2csv6xLqPb7>

Or scan the QR code



[ingss@lehigh.edu](mailto:ingss@lehigh.edu)

## Suggestion/Concern Form

Send the E-Board feedback

What issues are you facing as a grad?

Submissions can be anonymous

<https://bitly.com/GSSsuggest>

<https://forms.gle/H45JrxGbjXb45qdh7>



# Open Floor



Budget request forms sent out to all clubs this past Friday; due by May 1st as a hard deadline